



# AstroJet™ 5000 SHUTTLE HEAD PRINTER



inkjet  
technology by  invent

## PARTS MANUAL

**ASTRO MACHINE CORP.**

630 Lively Blvd.

Elk Grove Village, IL 60007

Phone: (847) 364-6363

Fax: (847) 364-9898

This manual is intended solely for the use and information of Astro Machine Corp., its designated agents, customers, and their employees. The information in this guide was obtained from several different sources that are deemed reliable by all industry standards. To the best of our knowledge, that information is accurate in all respects. However, neither Astro Machine Corp. nor any of its agents or employees shall be responsible for any inaccuracies contained herein.

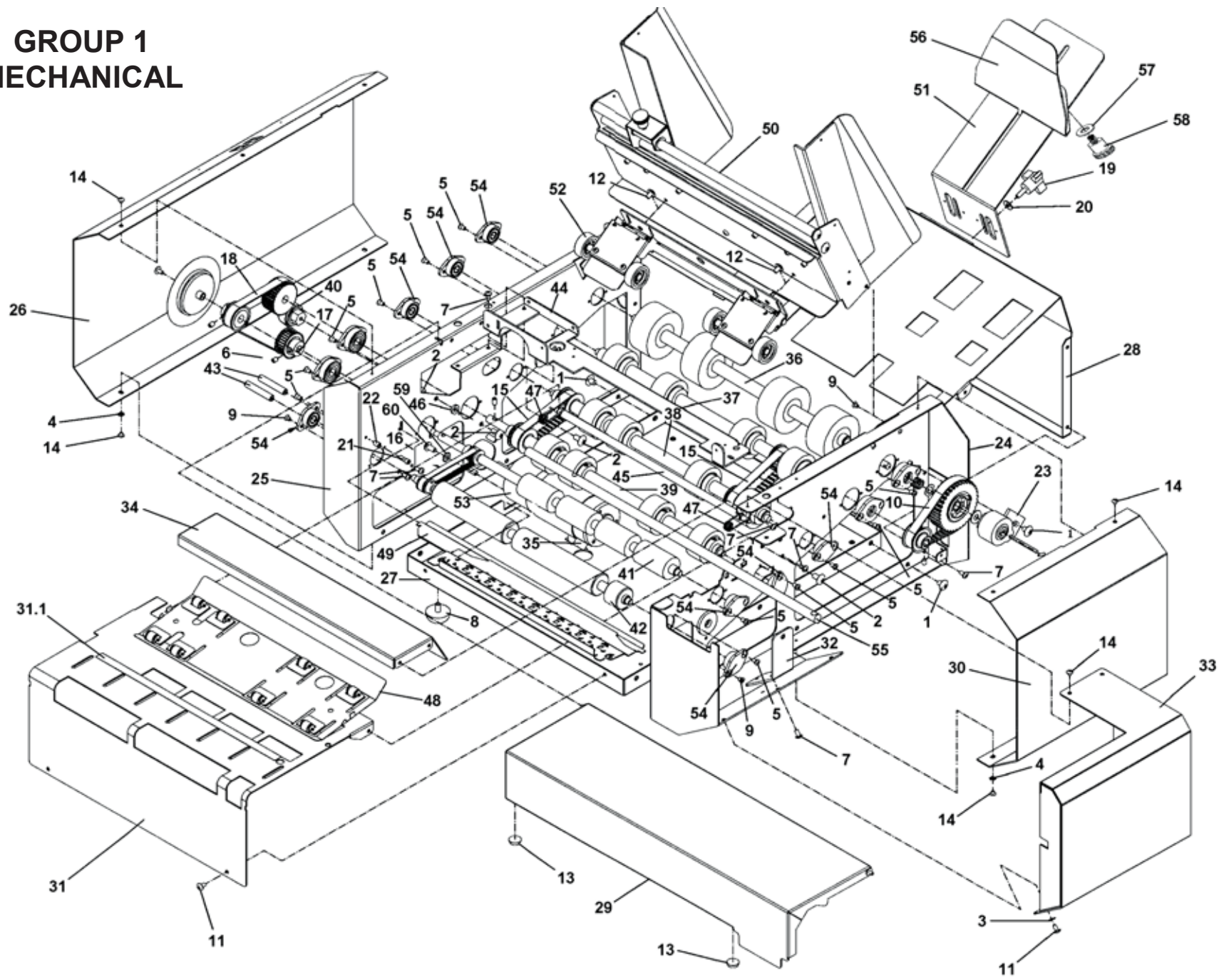
AstroJet<sup>is</sup> is a registered trademark of Astro Machine Corp.  
Hewlett-Packard is a registered trademark of Hewlett-Packard Corporation.  
Windows 95 and Windows 98 are registered trademarks of Microsoft Corporation.  
IBM is a registered trademark of International Business Machines.  
All other trademarks are the property of their respective holders.

All rights reserved. No part of this book may be reproduced or transmitted in any form or by any means, electronic or mechanical, including photocopying, recording, or any information storage and retrieval system, without permission in writing from the publisher

## **Table of Contents**

<b>GROUP 1 – MECHANICAL</b>	<b>4</b>
<b>GROUP 2 – PRINT ENGINE</b>	<b>6</b>
<b>GROUP 3 – ELECTRICAL</b>	<b>8</b>
<b>GROUP 4 – FEED SHAFT ASSEMBLY</b>	<b>10</b>
<b>GROUP 5. – DELIVERY SHAFT ASSEMBLY</b>	<b>11</b>
<b>GROUP 6 – PULL-OUT SHAFT ASSEMBLY</b>	<b>12</b>
<b>GROUP 7 – FEEDER EXIT SHAFT ASSEMBLY</b>	<b>13</b>
<b>GROUP 8 – PRINT ROLLER ASSEMBLY</b>	<b>14</b>
<b>GROUP 9 – METERING PLATE ASSEMBLY</b>	<b>15</b>
<b>GROUP 10 – ARM GUIDE BRACKET ASSEMBLY</b>	<b>16</b>
<b>NORMAL WEAR/RECOMMENDED SPARE PARTS</b>	<b>17</b>
<b>INDEX</b>	<b>18</b>

# GROUP 1 MECHANICAL



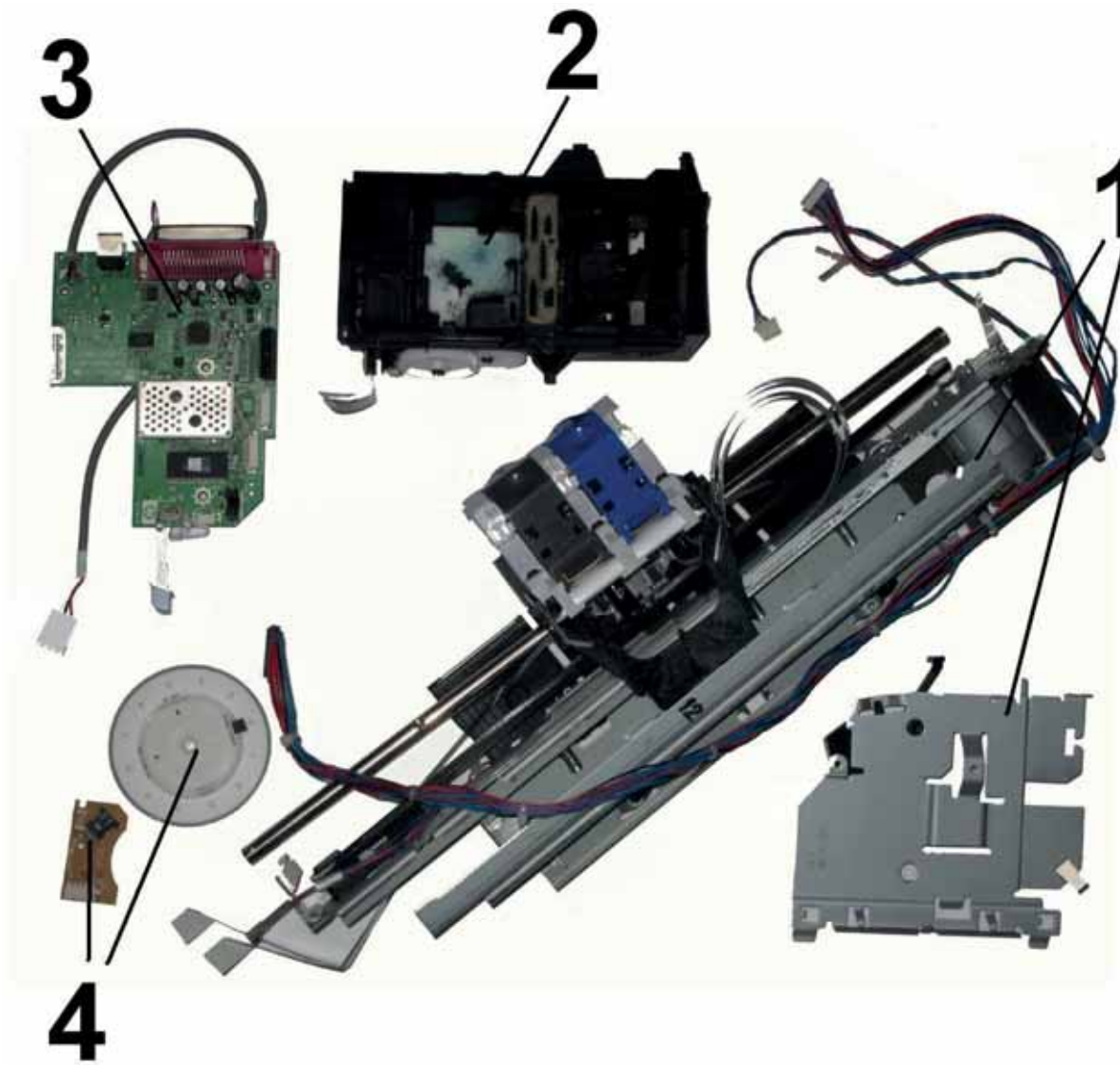
## GROUP 1 MECHANICAL

KEY	PART NO.	DESCRIPTION	QTY
1.	123-0017	SCREW, 10-32 x 1/4 TRUSS HD. PH. SS	7
2.	123-0024	SCREW, 10-32 x 3/8 TRUSS HD. PH. SS	4
3.	123-0252	LOCK WASHER, #6 EXTERNAL TOOTH	1
4.	123-0261	LOCK WASHER, #4 EXTERNAL TOOTH	2
5.	123-0275	SCREW, 6-32 x 1/4 OVAL CSK. HD. PH. SS	22
6.	123-0322	SET SCREW, 8-32 x 1/4 HEX SOC. CUP PT.	1
7.	123-0612	SCREW, 6-32 x 1/4 PAN-HD. SS	19
8.	123-0620	FOOT, RUBBER	4
9.	123-0675	SCREW, 6-32 x 3/16 FL. HD. PH. UNDERCUT	6
10.	123-0934	BELT, TIMING 90XL037	1
11.	123-1135	SCREW, 6-32 x 1/4 TRUSS HD. PH. SS	4
12.	123-1136	SCREW, 8-32 x 1/4 TRUSS HD. PH. SS	2
13.	123-1257	BUMPER, MOLDED URETHANE 2001CL	2
14.	123-1323	SCREW, 4-40 x 1/8 TRUSS HD. PH. SS	12
15.	123-1708	BELT, TIMING 80XL037	2
16.	123-2089	BELT, TIMING	1
17.	123-2091	PULLEY, A 6A23-026DF0908	1
18.	123-2092	BELT, TIMING A 6R23M104090	1
19.	123-2207	KNOB, THREE ARM 8-32	2
20.	123-2208	WASHER, #8	2
21.	20-100-36	SCREW, STOPPER	1
22.	20-100-37	SPACER, 3/16" x 0.250	1
23.	29-103-12	BRACKET, CLUTCH	1
24.	34-100-03	FRAME, REAR SIDE	1
25.	34-100-05	FRAME, FRONT SIDE	1
26.	34-100-07	FRONT COVER	1
27.	34-100-09	BASE, MOTOR	1
28.	34-100-11	CENTER PLATE ASSEMBLY	1
29.	34-100-14	TOP COVER	1
30.	34-100-16	COVER, REAR LEFT	1
31.	34-100-18	CENTER PLATE	1
31.1	34-100-32	NONREFLECTIVE TAPE	1
32.	34-100-22	PC BOARD HOLDER	1

KEY	PART NO.	DESCRIPTION	QTY
33.	34-100-24	REAR RIGHT COVER	1
34.	34-100-30	BRIDGE, TOP	1
35.	34-100-33	BUMPER ASSEMBLY	1
36.	34-101-02	FEED SHAFT ASSEMBLY ( <b>GROUP 4</b> )	1
37.	34-101-04	PULL-OUT SHAFT ASSEMBLY ( <b>GROUP 6</b> )	1
38.	34-102-02	DELIVERY SHAFT ASSEMBLY ( <b>GROUP 5</b> )	1
39.	34-102-04	FEEDER EXIT SHAFT ASSEMBLY ( <b>GROUP 7</b> )	1
40.	34-102-15	TENSIONER ASSEMBLY	1
41.	34-103-02	PRINT ROLLER ASSEMBLY ( <b>GROUP 8</b> )	1
42.	34-103-06	EXIT ROLLER ASSEMBLY	1
43.	34-103-12	HOLDER, PCB	2
44.	34-104-04	BRIDGE, BOTTOM ( <b>GROUP 2 - PRINT ENG.</b> )	1
45.	34-104-07	BAR, PAPER GUIDE	1
46.	34-104-09	SPACER, SLIDE SHAFT	1
47.	34-104-11	SPRING, PAPER GUIDE BAR	2
48.	34-105-05	PAPER GUIDE	1
49.	34-105-08	EXIT WHEELS BRACKET	1
50.	34-106-03	METERING PLATE ASSEMBLY ( <b>GROUP 9</b> )	1
51.	34-107-10	REAR SUPPORT GUIDE	1
51.	34-107-11	REAR SUPPORT GUIDE ( <b>JAPAN</b> )	1
52.	34-108-02	ARM GUIDE BRACKET ASSEMBLY ( <b>GROUP10</b> )	1
53.	34-500-16	MOTOR, GEAR 30.3 VDC	1
54.	90-103-52	BALL BEARING ASSEMBLY	8
55.		CARRIAGE BAR ( <b>SEE GROUP 2</b> )	1
56.	34-107-16	REAR MEDIA SUPPORT	1
56.	34-107-17	REAR ENVELOPE SUPPORT	1
57.	123-0148	WASHER, 7/16 OD x 0.200 ID x 1/32	1
58.	62-100-50	KNOB	1
59.	123-0237	LOCK WASHER, #10 EXTERNAL TOOTH	2
60.	123-1210	SCREW, 10-3 x 3/8 BTN. HEAD SOC. CAP SS BLK.	2
*	34-550-10	DECAL, MAIN	1
*	34-550-20	DECAL, DIAL, ROUND	1

\* NOT SHOWN

**GROUP 2  
PRINT ENGINE**

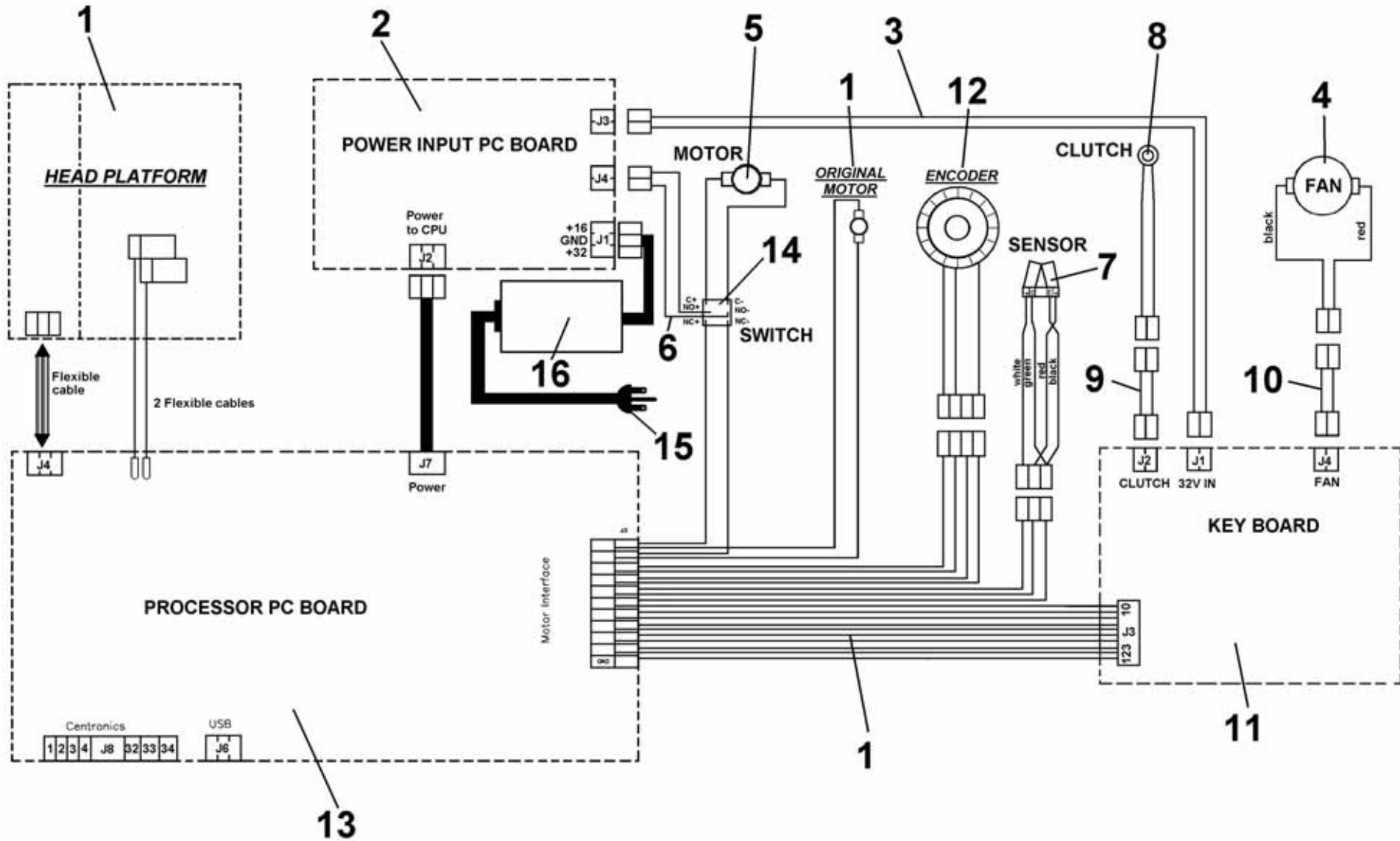


## GROUP 2 PRINT ENGINE

KEY	PART NO.	DESCRIPTION	QTY
1.	34-500-32	PRINT ENGINE, ( <i>INCLUDES ENCODER STRIP</i> )	1
2.	34-109-06	MAINTENANCE STATION	1
3.	34-500-25	MAIN PROCESSOR PC BOARD	1
4.	34-500-31	ENCODER AND ENCODER SENSOR PC BOARD	1



# GROUP 3 ELECTRICAL

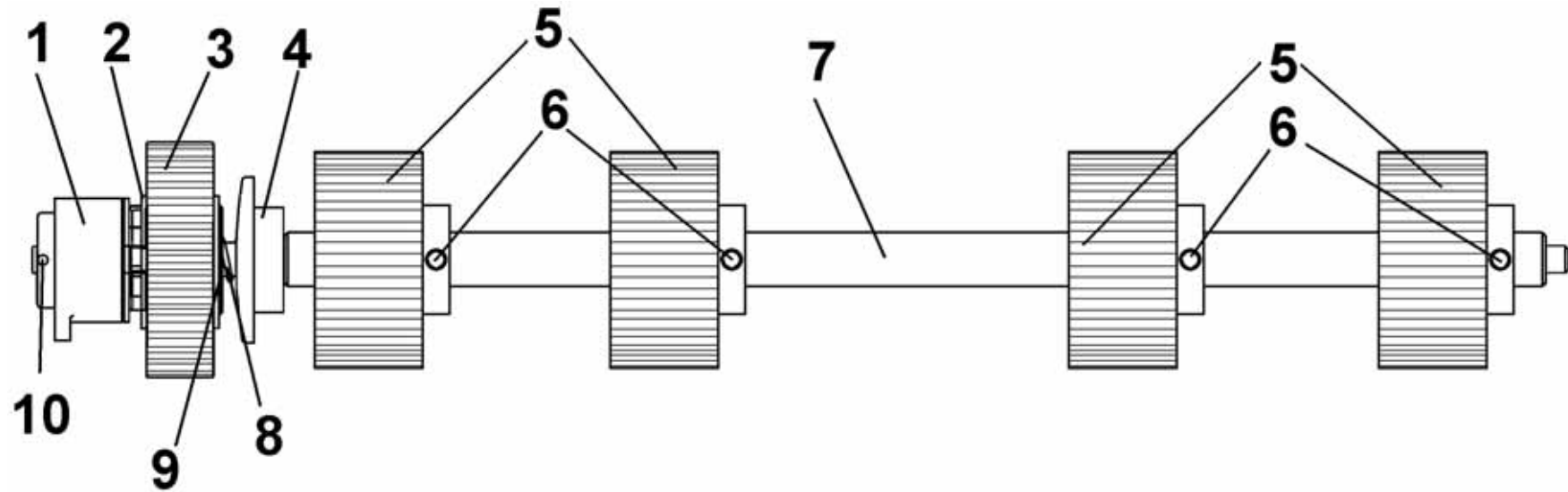




## GROUP 3 ELECTRICAL

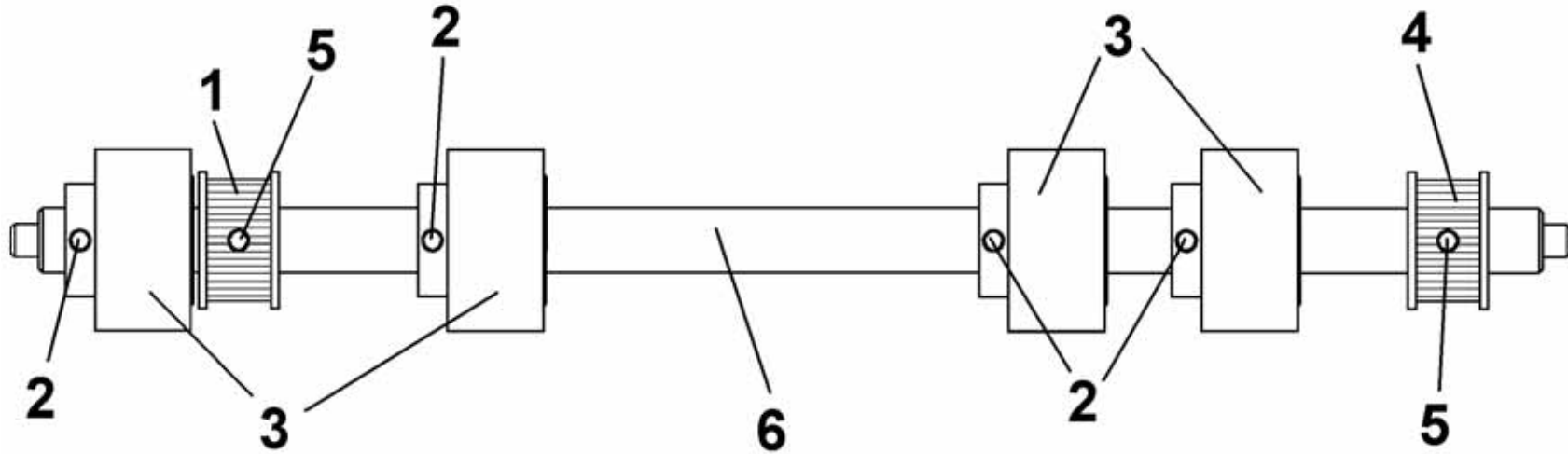
KEY	PART NO.	DESCRIPTION	QTY
1.	34-500-26	MAIN WIRE HARNESS	1
2.	34-500-40	POWER INPUT PC BOARD	1
3.	34-500-13	WIRE HARNESS, SWITCH-PCB-KEYBOARD	1
4.	34-500-17	FAN ASSEMBLY	1
5.	34-500-16	MAIN DRIVER MOTOR ASSEMBLY	1
6.	34-500-14	WIRE HARNESS, SWITCH PCB-SWITCH BUTTON	1
7.	34-500-18	PAPER SENSOR ASSEMBLY	1
8.	34-500-19	CLUTCH ASSEMBLY	1
9.	34-500-11	WIRE HARNESS, CLUTCH EXTENSION	1
10.	34-500-12	WIRE HARNESS, FAN EXTENSION	1
11.	34-500-30	KEY BOARD ASSEMBLY	1
12.	34-500-31	ENCODER & ENCODER SENSOR PC BOARD	1
13.	34-500-25	MAIN PROCESSOR PC BOARD	1
14.	123-2145	SWITCH	1
15.	123-0635	POWER CORD, 115V, 7' DOMESTIC/JAPAN	1
15.	123-0735	POWER CORD, 220V EUROPE	1
15.	123-2187	POWER CORD, 220V CHINA	1
16.	123-2158	UNIVERSAL POWER SUPPLY	1

## GROUP 4 FEED SHAFT ASSEMBLY



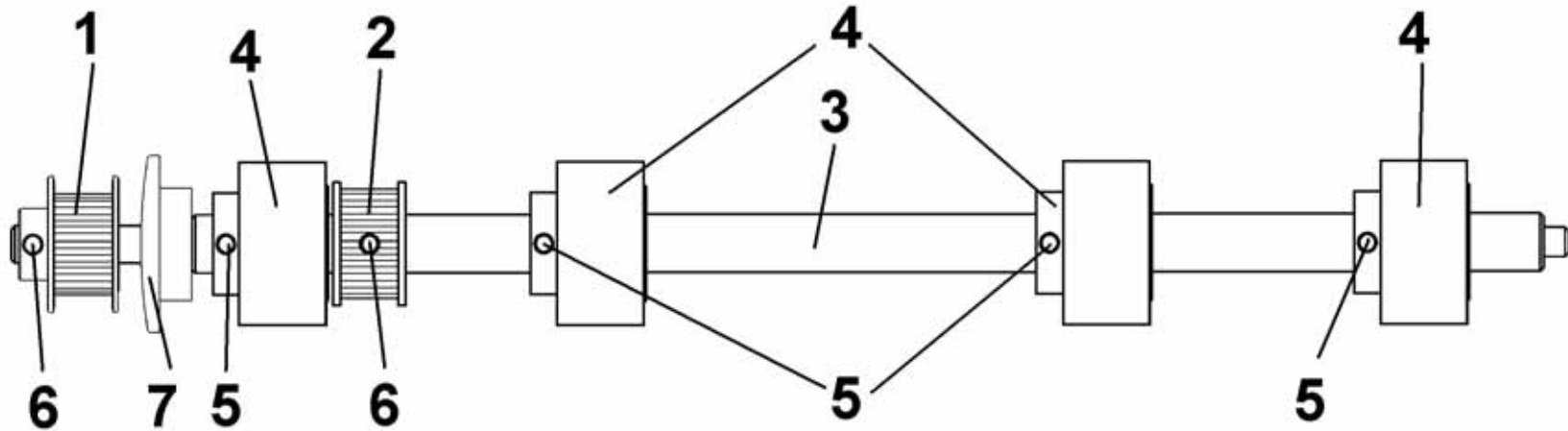
KEY	PART NO.	DESCRIPTION	QTY
1.	34-500-19	CLUTCH ASSEMBLY	1
2.	27-102-10	WASHER, CLUTCH SUPPORT	1
3.	34-101-07	CLUTCH PULLEY ASSEMBLY	1
4.	29-103-09	BALL BEARING HOUSING ASSEMBLY	1
5.	90-102-21	FEED ROLLER ASSEMBLY	4
6.	123-1861	SET SCREW, 10-24 x 1/4 CUP PT.	4
7.	34-101-03	SHAFT, FEED	1
8.	29-103-08	SPRING, BLACK	1
9.	123-0312	WASHER, 5/16 x 1/2 x 0.030 PLATED	1
10.	123-1828	PIN, DOWEL 3/32" DIA 3/8" SS 1	1

## GROUP 5 DELIVERY SHAFT ASSEMBLY



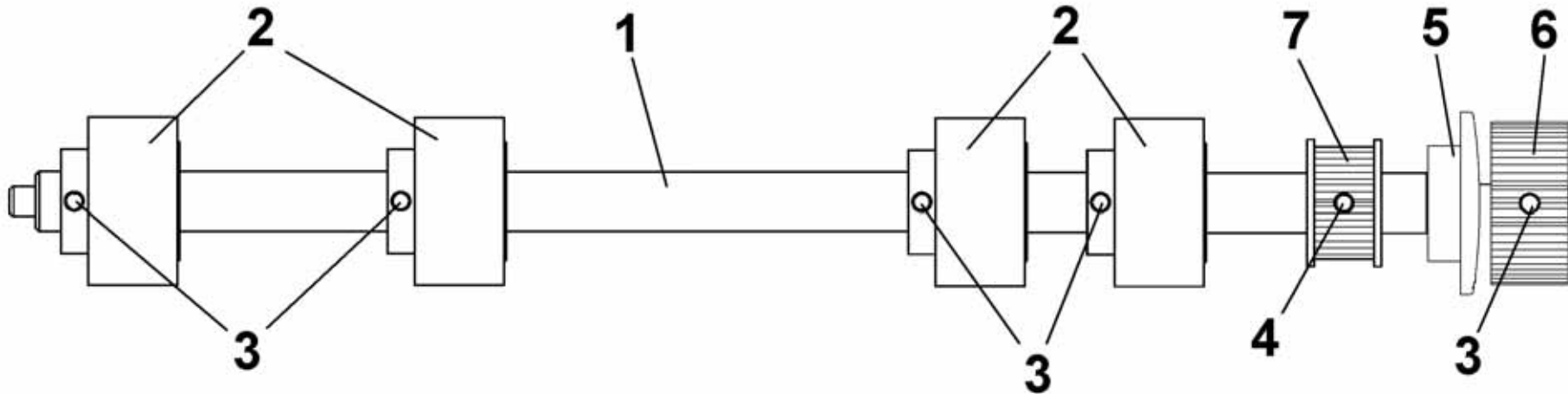
KEY	PART NO.	DESCRIPTION	QTY
1.	34-102-10	PULLEY, 14 GROOVE XL	2
2.	123-1956	SET SCREW, 8-32 x 5/16 SOC. HD.	4
3.	56-101-17	RUBBER FEED ROLLER ASSEMBLY	4
4.	123-0322	SET SCREW, 8-32 x 1/4 HEX SOC. CUP PT.	2
5.	34-102-03	SHAFT, DELIVERY	1

## GROUP 6 PULL-OUT SHAFT ASSEMBLY



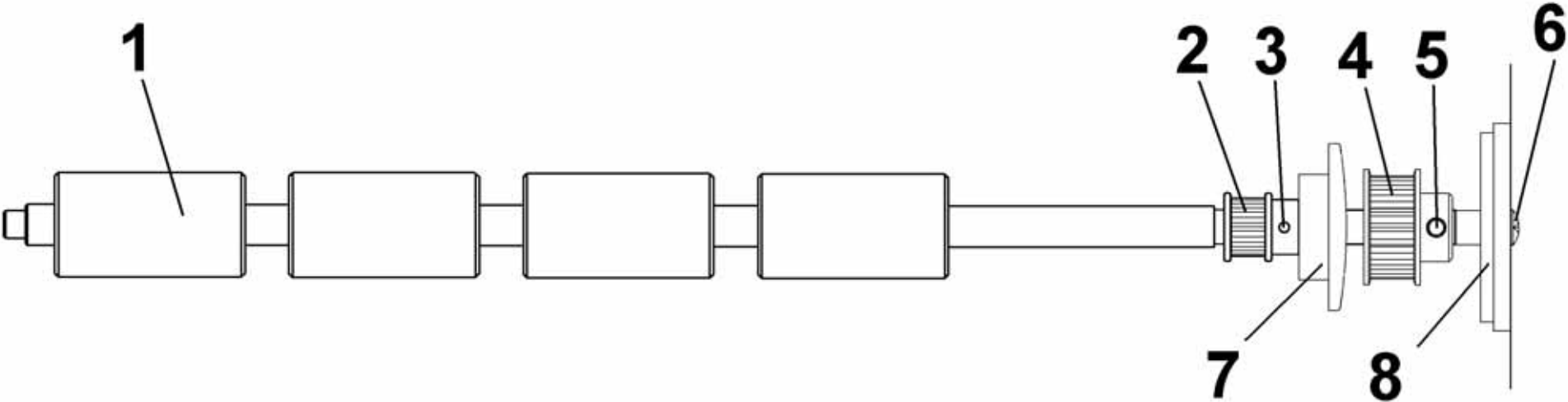
KEY	PART NO.	DESCRIPTION	QTY
1.	123-0990	PULLEY, 14XL037 - 0.89X0.563	1
2.	34-102-10	PULLEY, 14 GROOVE XL	1
3.	34-101-05	SHAFT, PULL OUT	1
4.	56-101-17	RUBBER FEED ROLLER ASSEMBLY	4
5.	123-1956	SET SCREW, 8-32 x 5/16 SOC. HD.	4
6.	123-0322	SET SCREW, 8-32 x 1/4 HEX SOC. CUP PT.	2
7.	29-103-09	BALL BEARING HOUSING ASSEMBLY	1

## GROUP 7 FEEDER EXIT SHAFT ASSEMBLY

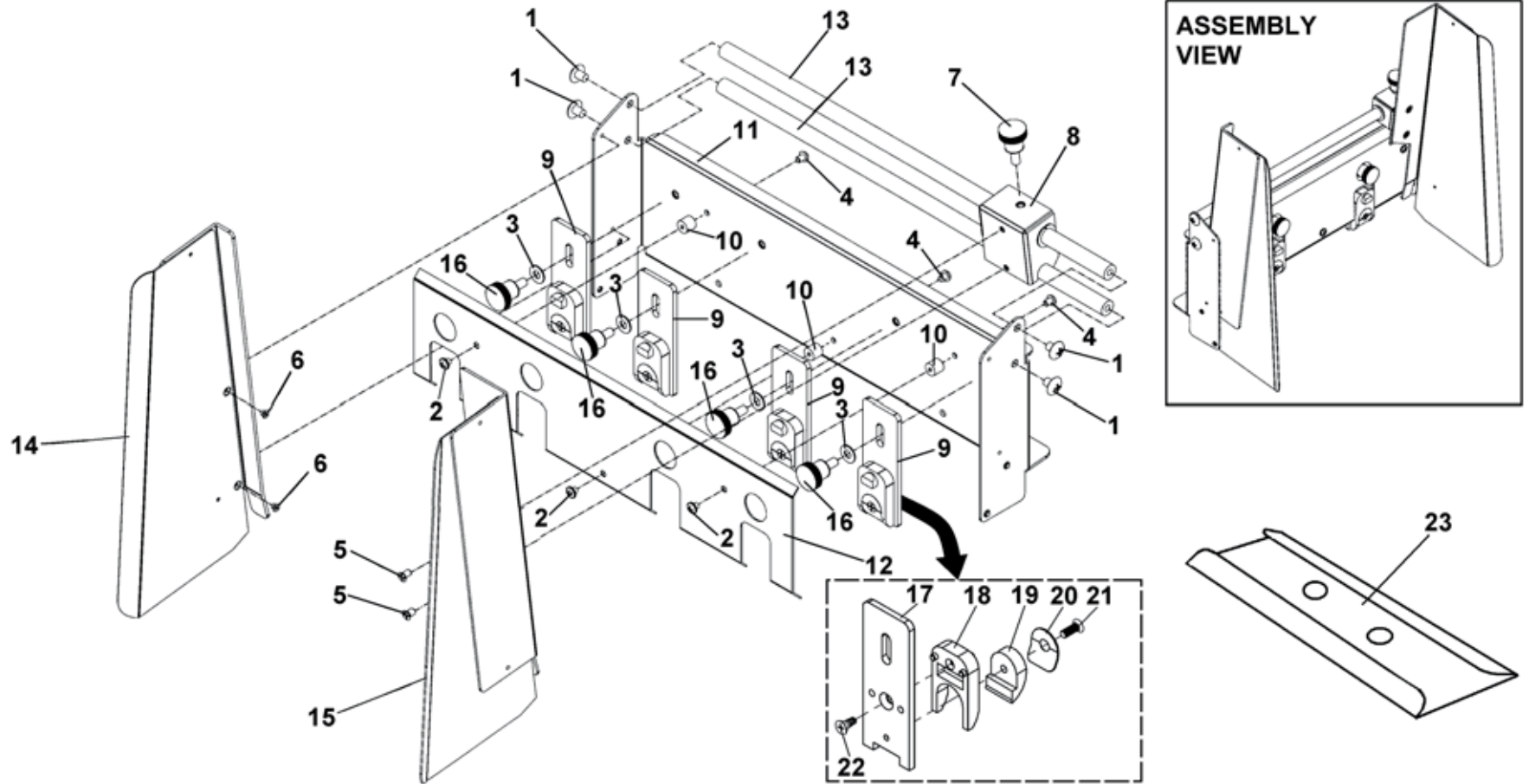


KEY	PART NO.	DESCRIPTION	QTY
1.	34-102-05	SHAFT, FEEDER EXIT	1
2.	56-101-17	RUBBER FEED ROLLER ASSEMBLY	4
3.	123-1956	SET SCREW, 8-32 x 5/16 SOC. HD.	5
4.	123-0322	SET SCREW, 8-32 x 1/4 HEX SOC. CUP PT.	1
5.	29-103-09	BALL BEARING HOUSING ASSEMBLY	1
6.	34-102-12	PULLEY, 3MMP-37T H T D	1
7.	34-102-10	PULLEY, 14 GROOVE XL	1

# GROUP 8 PRINT ROLLER ASSEMBLY



KEY	PART NO.	DESCRIPTION	QTY
1.	34-103-03	ROLLER, PRINT	1
2.	34-103-11	PULLEY, 40 D. P., 21 GROOVE	1
3.	123-0695	PIN, 3/32 x 1/2 SPRING STEEL	1
4.	34-103-14	PULLEY, 3MM, 25 GROOVES	1
5.	123-0322	SET SCREW, 8-32 x 1/4 HEX SOC. CUP PT.	1
6.	123-1135	SCREW, 6-32 x 1/4 TRUSS HD. PH.	1
7.	29-103-09	BALL BEARING HOUSING ASSEMBLY	1
8.	34-500-31	ENCODER WHEEL ( <i>SEE GROUP 2</i> )	1

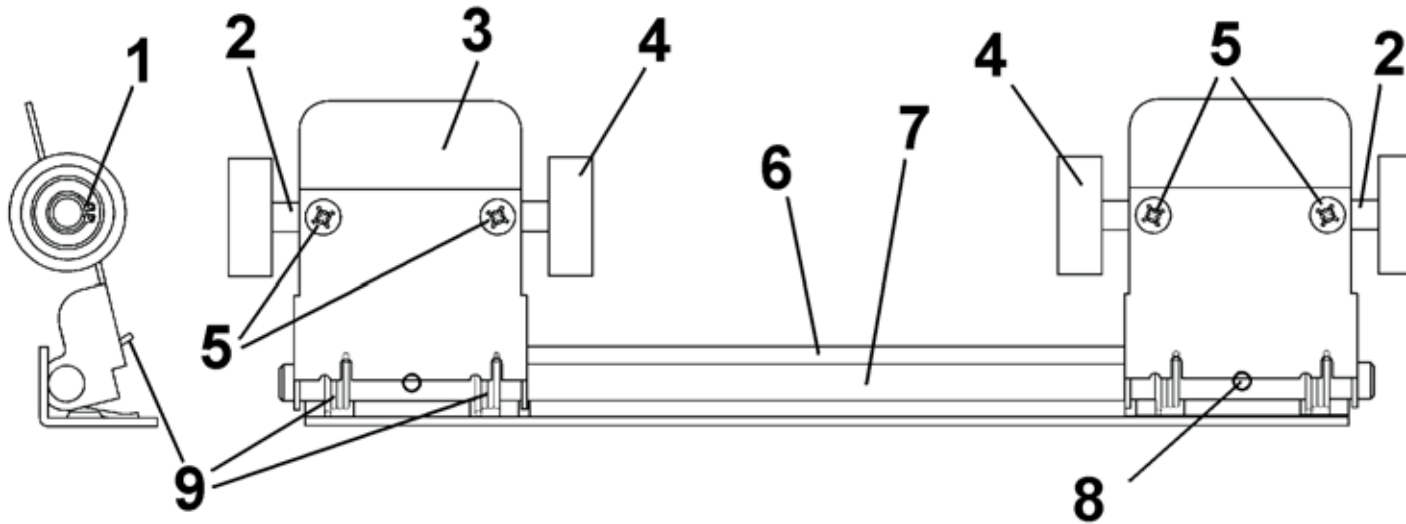


KEY	PART NO.	DESCRIPTION	QTY
1.	123-0017	SCREW, 10-32 x 1/4 TRUSS HD. PH. SS	4
2.	123-0127	SCREW, 6-32 x 1/8 PAN HD. SS	3
3.	123-0148	WASHER, 7/16 OD x 0.200 ID x 1/32	4
4.	123-0461	SCREW, 6-32 x 3/16 RND HD. PH SS	3
5.	123-1178	SCREW, 6-32 x 1/4 FL. HD. PH, UNDERCUT	2
6.	123-1158	SCREW, 4-40 x 3/16 FL. HD. PH, UNDERCUT SS	2
7.	24-101-11	SCREW, 10-32, PAPER GUIDE	1
8.	29-101-09	REAR SIDE GUIDE BLOCK ASSEMBLY	1
9.	29-101-12	METERING FINGER ASSEMBLY	4
10.	29-101-16	SPACER	3
11.	34-106-04	PLATE, METERING	1
12.	34-106-08	COVER, METERING PLATE	1

KEY	PART NO.	DESCRIPTION	QTY
13.	34-106-10	BAR, SIDE GUIDE	2
14.	34-107-05	GUIDE, FRONT PAPER	1
15.	34-107-07	GUIDE, REAR PAPER	1
16.	94-104-06	KNOB, METERING BRACKET	4
17.	29-101-13	METERING FINGER	4
18.	21-101-15	METERING KNOB	4
19.	90-103-09	METERING SEGMENT	4
20.	66-101-13	WASHER	4
21.	123-0751	SCREW, 6-32 x 3/8 PH UNDERCUT SS	4
22.	123-1310	SCREW, 6-32 x 3/8 PH FL SELF-TAP	4
23.	34-107-31	WEIGHT, #10 ENVELOPES	1
23.	34-107-32	WEIGHT, #9 ENVELOPES	1



## GROUP 10 ARM GUIDE BRACKET ASSEMBLY



KEY	PART NO.	DESCRIPTION	QTY
1.	123-0257	RETAINING RING, #3100-25 - 1	8
2.	34-108-14	SHAFT, LONG PULL OUT	2
3.	34-108-10	ARM	2
4.	97-115-02	WHEEL ASSEMBLY WITH BEARING	4
5.	123-0976	SCREW, 4-40 x 1/4 PAN HD. PH. S	4
6.	34-108-06	BRACKET, ARM GUIDE	1
7.	34-108-11	SHAFT, ARM GUIDE	1
8.	123-0446	SCREW, 8-32 x 5/16 FL. HD. UNDERCUT	2
9.	21-122-08	SPRING	4

### NORMAL WEAR PARTS

PART NO.	DESCRIPTION	QTY PER PRINTER
123-0751	SCREW, 6-32 x 3/8 PH UNDERCUT SS	4
123-0934	BELT, TIMING 90XL037	1
123-1708	BELT, TIMING 80XL037	2
123-2089	BELT, TIMING	1
123-2092	BELT, TIMING A 6R23M104090	1
21-122-08	SPRING	4
29-103-09	BALL BEARING HOUSING ASSEMBLY	4
34-103-03	ROLLER, PRINT	1
34-105-05	PAPER GUIDE	1
56-101-17	RUBBER FEED ROLLER ASSEMBLY	12
66-101-13	WASHER	4
90-102-21	FEED ROLLER ASSEMBLY	4
90-103-09	METERING SEGMENT	4
97-115-02	WHEEL ASSEMBLY WITH BEARING	4

### RECOMMENDED SPARE PARTS

PART NO.	DESCRIPTION	QTY PER PRINTER
123-2158	UNIVERSAL POWER SUPPLY	1
34-500-40	POWER INPUT PC BOARD	1
34-500-32	PRINT ENGINE	1
34-500-31	ENCODER AND ENCODER SENSOR PC BOARD	1
34-500-30	KEYBOARD ASSEMBLY	1
34-500-25	MAIN PROCESSOR PC BOARD	1
34-500-19	CLUTCH ASSEMBLY	1
34-500-18	PAPER SENSOR ASSEMBLY	1
34-500-17	FAN ASSEMBLY	1
34-500-16	MOTOR, GEAR 30.3 VDC	1
34-109-06	MAINTENANCE STATION	1

PART NO.	GROUP	KEY
123-0017	1	1
123-0017	9	1
123-0024	1	2
123-0127	9	2
123-0148	1	57
123-0148	9	3
123-0237	1	59
123-0252	1	3
123-0257	10	1
123-0261	1	4
123-0275	1	5
123-0312	4	9
123-0322	1	6
123-0322	5	4
123-0322	6	6
123-0322	7	4
123-0322	8	5
123-0446	10	8
123-0461	9	4
123-0612	1	7
123-0620	1	8
123-0635	3	15
123-0675	1	9
123-0695	8	3
123-0735	3	15
123-0751	9	20
123-0934	1	10
123-0976	10	5
123-0990	6	1
123-1135	1	11
123-1135	8	6
123-1136	1	12
123-1158	9	6
123-1178	9	5
123-1210	1	60
123-1257	1	13
123-1310	9	22
123-1323	1	14
123-1708	1	15
123-1828	4	10
123-1861	4	6
123-1956	5	2
123-1956	6	5
123-1956	7	3
123-2089	1	16
123-2091	1	17
123-2092	1	18
123-2145	3	14
123-2158	3	16

PART NO.	GROUP	KEY
123-2187	3	15
123-2207	1	19
123-2208	1	20
20-100-36	1	21
20-100-37	1	22
21-101-15	9	18
21-122-08	10	9
24-101-11	9	7
27-102-10	4	2
29-101-09	9	8
29-101-12	9	9
29-101-13	9	17
29-101-16	9	10
29-103-08	4	8
29-103-09	4	4
29-103-09	6	7
29-103-09	7	5
29-103-09	8	7
29-103-12	1	23
34-100-03	1	24
34-100-05	1	25
34-100-07	1	26
34-100-09	1	27
34-100-11	1	28
34-100-14	1	29
34-100-16	1	30
34-100-18	1	31
34-100-22	1	32
34-100-24	1	33
34-100-30	1	34
43-100-32	1	31.1
34-100-33	1	35
34-101-02	1	36
34-101-03	4	7
34-101-04	1	37
34-101-05	6	3
34-101-07	4	3
34-102-02	1	38
34-102-03	5	5
34-102-04	1	39
34-102-05	7	1
34-102-10	5	1
34-102-10	6	2
34-102-10	7	7
34-102-12	7	6
34-102-15	1	40
34-103-02	1	41
34-103-03	8	1
34-103-06	1	42

PART NO.	GROUP	KEY
34-103-11	8	2
34-103-12	1	43
34-103-14	8	4
34-104-04	1	44
34-104-07	1	45
34-104-09	1	46
34-104-11	1	47
34-105-05	1	48
34-105-08	1	49
34-106-03	1	50
34-106-04	9	11
34-106-08	9	12
34-106-10	9	13
34-107-05	9	14
34-107-07	9	15
34-107-10	1	51
34-107-11	1	51
34-107-16	1	56
34-107-17	1	56
34-107-31	9	23
34-107-32	9	23
34-108-02	1	52
34-108-06	10	6
34-108-10	10	3
34-108-11	10	7
34-108-14	10	2
34-109-06	2	2
34-500-11	3	9
34-500-12	3	10
34-500-13	3	3
34-500-14	3	6
34-500-16	1	53
34-500-16	3	5
34-500-17	3	4
34-500-18	3	7
34-500-19	3	8
34-500-19	4	1
34-500-25	2	3
34-500-25	3	13
34-500-26	3	1
34-500-30	3	11
34-500-31	2	4
34-500-31	3	12
34-500-31	8	8
34-500-32	2	1
34-500-40	3	2
34-550-10	1	*
34-550-20	1	*
56-101-17	5	3

PART NO.	GROUP	KEY
56-101-17	6	4
56-101-17	7	2
62-100-50	1	58
66-101-13	9	20
90-102-21	4	5
90-103-09	9	19
90-103-52	1	54
94-104-06	9	16
97-115-02	10	4

Copyright © 2014 Astro Machine Corp.  
Elk Grove Village, IL 60007  
05/28/2014

**Part Number: 100-AJ5000 Rev. K**